



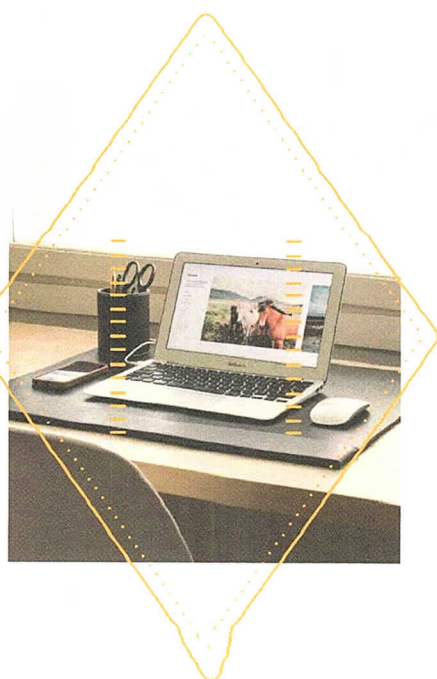
## SUSAN WELTNER-BRUNTON, PH.D. & ASSOCIATES, INC.

### INTRODUCING BOBBI NUMAN ERD, PH.D.

Susan Weltner-Brunton, Ph.D. & Associates is pleased to announce the addition of Dr. Bobbi Numan Erd, an Ohio licensed psychologist and an independent contractor providing psychological services to adults. Dr. Erd earned a Doctorate degree in Clinical Psychology from Northwestern University. She completed her internship at the Captain James A. Lovell Federal Health Care Center in North Chicago, Illinois. Her research focused on the exploration of various aspects of memory and the effects of depression on neuropsychological functioning. Dr. Erd specializes in helping adults over the age of 21 who are struggling with issues such as depression, anxiety, life transitions, grief and loss, stress, and low self-esteem.



### NOTES ON TELEPSYCHOLOGY



The use of telehealth and telepsychology have exploded during the COVID-19 pandemic. Telepsychology, however, is not new. The first US-based telepsychiatry connection was made in 1959 using early videoconferencing technology to deliver therapy and student training at a Nebraska state hospital. In 1988, the federal government began forming its evidence base to support the use of telebehavioral health, particularly in underserved rural areas. CMS has been paying for telebehavioral health for approximately 20 years, but only in rural areas. The Telebehavioral Health Institute houses more than 4,500 articles on the effectiveness of delivering mental health care through electronic means including telephone, videoconferencing, e-mail, text, and apps. There is significant evidence that clients quickly adapt and establish rapport with mental health therapists and that psychotherapy is amenable to the telehealth format. At Susan Weltner-Brunton, Ph.D. & Associates, we have been offering telepsychology services through a HIPAA secure video conferencing platform since March, 2020. Both staff and clients find it convenient and accessible. Clients are asked to give informed consent including their location and an emergency contact before using telehealth. All major insurances are covering telehealth services during the pandemic.

BOBBI NUMAN ERD, PH.D is now available for new adult referrals.

KERRY MONAHAN, PSY. D. is available for referrals neuropsychological and ADHD evaluations.

TELEPSYCHOLOGY services are available and still preferred, except for neuropsychological testing.



"RESEARCH CONTINUES TO AFFIRM THE EFFICACY OF TELEMENTAL HEALTH SERVICES, WITH STUDIES SHOWING THAT VIDEOCONFERENCING IS AS EFFECTIVE AS FACE-TO-FACE TREATMENTS."

### Contact Us

Susan Weltner-Brunton,  
Ph.D & Associates, Inc.  
921 Chatham Lane, Suite 112  
Columbus, OH 43221  
PH: 614-754-7648  
Fax: 614-754-7965  
[drsusan@swbphd.com](mailto:drsusan@swbphd.com)  
[www.swbphd.com](http://www.swbphd.com)

SUSAN WELTNER-BRUNTON, PH.D &  
ASSOCIATES, INC.

921 Chatham Lane, Suite 112  
Columbus, OH 43221